

# TECMEN G Series Face Shield Helmets

Fresh, Cool Air with Full Face & Head Protection



## Why Choose a G10 or G20?

A standard face shield only protects your face—the TECMEN G-Series protects your face, lungs, and head in one system. Unlike traditional face shields, the G10 Bump Cap and G20 Hard Hat integrate with PAPR technology, providing a constant supply of fresh, filtered air while protecting against dust, sparks, and impact risks. The G10 is lightweight and highly adjustable, perfect for grinding and fabrication, while the G20 includes a built-in hard hat, making it ideal for heavy industrial sites where head protection is required. No fogging, no heat buildup—just all-day comfort and protection.

### Options:



**G10 Bump Cap  
with FreFlow**  
Code: WSHWRG1001



**G10 Bump Cap  
Only**  
Code: WSHWRG1000



**G20 Hard Hat  
with FreFlow**  
Code: WSHWRG2001



**G20 Hard Hat  
Only**  
Code: WSHWRG2000

# When Do You Need a G10 or G20?

If your job exposes you to flying debris, harmful dust, or head protection, a standard face shield won't cut it. The G10 Bump Cap and G20 Hard Hat deliver unmatched protection by combining a high-impact face shield helmet with a Powered Air-Purifying Respirator (PAPR)—keeping your lungs clear and your vision sharp.

## 10 Tasks That Demand G-Series Protection



### Grinding & Surface Prep

Stops sparks, dust, and fine metal particles from reaching your lungs.



### Cutting & Plasma Cutting

Blocks high-speed debris and toxic fumes from metal cutting operations.



### Sanding & Polishing

Protects against fine metal dust that can cause long-term respiratory issues.



### Fabrication & Assembly

Shields your face while preventing exposure to airborne shavings and adhesives.



### Spray Painting & Coating

Works with gas filters to block harmful fumes and overspray.



### Foundry Work & Casting

Offers heat protection and cool, clean air in high-temperature environments.



### Deburring & Finishing

Prevents sharp metal chips from hitting your face while keeping your breathing zone clean.



### CNC Machining & Milling

Blocks ejected debris and airborne coolant mist for a safer, clearer workspace.



### Inspection Work

In-house and on-site inspections where head, face and respiratory protection is required.



### Industrial Maintenance & Repairs

Ideal for cleaning, rust removal, and other high-exposure tasks.



No melting or deformation in high temperature environment up to 135°C



## Different grades to meet a variety of head protection requirements.



**EN812:2012**

**EN166:2001**

G10 bump cap face shield meets EN812 standard, providing comprehensive breathing, head, eye and face protection for users.



**EN397:2012**

**EN166:2001**

G20-V hard hat face shield meets EN397 hard hat standard, integrated one-piece design, protecting the user from mechanical impact and falling objects

# Work Smarter and Safer with TECMEN G10 & G20 Face Shield Helmets

By upgrading to the G10 or G20 with FreFlow, you're not just choosing better gear—you're choosing better health, comfort, and compliance. Keep your team safe, productive, and protected.



**Multipoint buffer**  
to disperse vibrations.

## **Bump cap/Hard hat protection**

Blended engineering plastics with both rigidity and toughness.  
G10 bump cap compliant to EN812:2012.  
G20 hard hat compliant to EN397:2012.

## **Flip-up design**

Easily flip-up the face shield.

## **Large impact resistant face shield**

provides unobstructed vision with no distortion and allows complete transmission of light while protecting the eyes and face from heat and debris.

Face shield impact rating  
Certified to EN166:2001 CE CatII  
3 - Splashes of liquids.  
9 - Molten metals and hot solids.  
High impact rating to AS/NZS1337

## **Comfortable, 6 point adjustable head gear**

Top of the headgear is adjustable in 6 positions, the rear is adjustable to suit a variety of head shapes.

## **Water resistant flame retardant face seal**

with great sealing performance, ensuring that a micro-positive pressure state is formed in the face shield.



## **Comes with a large trade backpack**

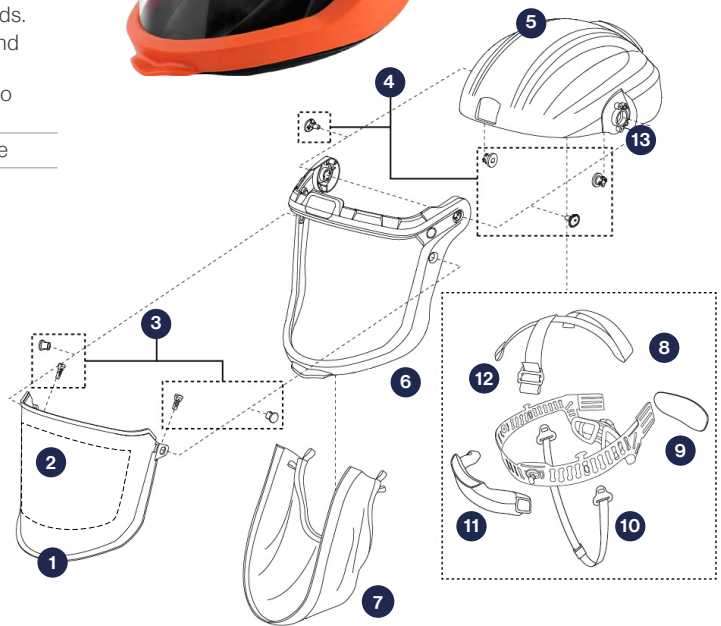
to store and carry helmet and respirator unit.  
Extra storage department for spare lens and filters.



# G10/20 Specifications, Parts & Accessories

## G10/G20 Face Shield Helmet Specification

Model	G10	G20
Helmet with FreFlow	WSHWRG1001	WSHWRG2001
Helmet Only	WSHWRG1000	WSHWRG2000
Head Protection Standard	Bump cap EN812:2012	Hard hat EN397:2012
Weight	660g	792g
Applications	Cutting, Grinding, Sanding, Polishing, Painting, Spraying, Chemical Use	Cutting, Grinding, Sanding, Polishing, Painting, Spraying, Chemical Use
Eye and Face Protection	Certified to EN166:2001 CE CatII 3 - Splashes of liquids. 9 - Molten metals and hot solids. High impact rating to ASNZS1337	Certified to EN166:2001 CE CatII 3 - Splashes of liquids. 9 - Molten metals and hot solids. High impact rating to ASNZS1337
FreFlow connection	Bayonet connect hose	Quick connect hose



## G10/20 Face Shield Spare Parts

Item	Qty	Code
1 Clear Protector Visor	1	WSHWRG1004
2 Peel of Visor Cover	10pk	WSHWRG1003
3 Visor Frame Button Set	1	WSHWRG1009
4 Bump Cap Connection Set	1	WSHWRG1019
5 G10 Bump Cap Top	1	WSHWRG1018
5 G20 Hard Hat Top	1	WSHWRG2018
6 Visor Frame	1	WSHWRG1008
7 Face Seal	1	WSHWRG1016
8 G10 Headgear	1	WSHWRG1014
8 G20 Headgear	1	WSHWRG2014
9 Back Comfort Pad	1	WSHWRG1006
10 Chin Strap	1	WSHWRG1020
11 Front Sweat Band	1	WSHWRG1005
12 G10 Ribbon for Headgear	1	WSHWRG1013
12 G20 Ribbon for Headgear	1	WSHWRG2013
13 Face Shield Flip Up Spring Pair	1	WSHWRG1011



## Optional

Item	Qty	Code
TECMEN G10/20 Face Shield Flip Up Shade 5 Lens	1	WSHWRG1010



This shade 5 lens connects to the G10 or G20 helmet visor to provide effective protection against UV/IR.

- Optical grade PC material delivers high-resolution clear vision.
- The high-intensity visor provides effective protection against UV/IR radiation, particle spatter, liquid spatter, metal melt, and hot solid spatter, ensuring optimal safety.
- Easy flip-up function and parked position when not needed so able to keep the respirator helmet on at all times.